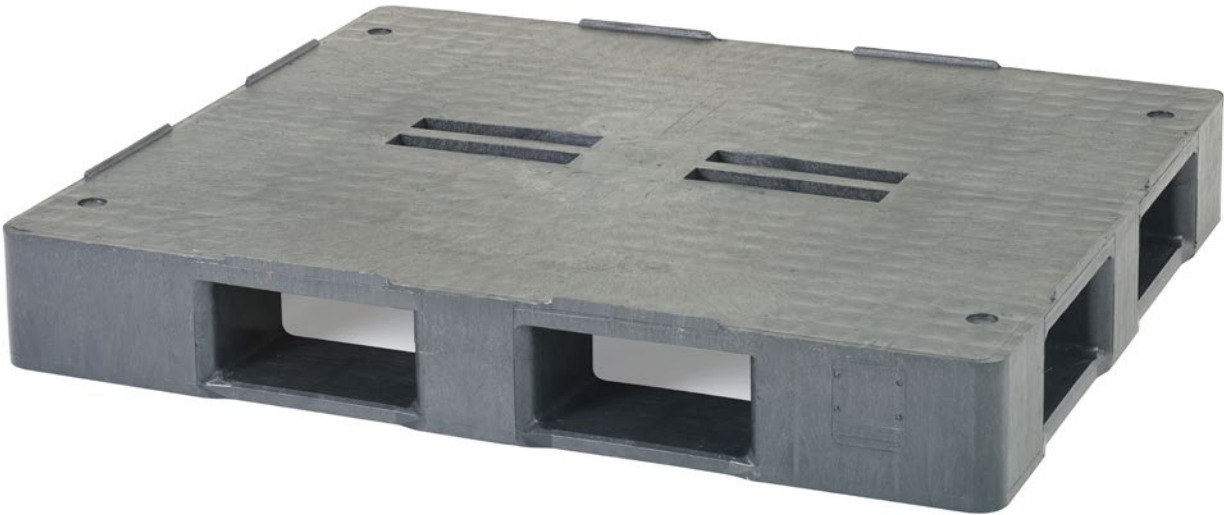


Endur i9.1

1200 x 1000



Extremely stable plastic pallet for loads up to 2000 kg in the high rack

The Endur i9.1 is an excellent solution for heavy loads. Its robust design makes the pallet resistant to impact and able to carry loads of up to 2000 kg in high-bay racks and during transport, as well as up to 8000 kg in static storage. This high-performance pallet is also ideal for transporting and storing big bags.

Bottom support

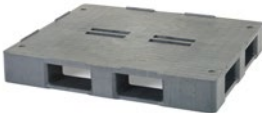


> 9 feet (9F) on request

> 3 runners (3R) on request

> 5 runners (5R)

Deck options



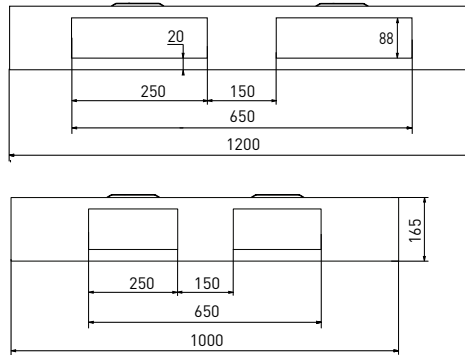
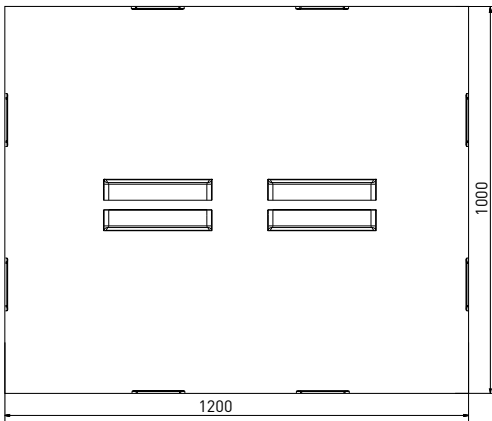
> open deck (OD)

Rounded edges protect the pallet from damage.

Technical data*1

	Bottom support	Top deck	Dimensions [mm]	Load capacities*2 [kg]			Weight [kg]		Pallets per		
				Static	Dynamic	Racking	HDPE	PO	Stack	Truck	
Endur i9.1 (OD-9F)	9 feet	open	1200 x 1000 x 165	8000	4000	2000	–	27,0	–	15	390
Endur i9.1 (OD-3R)	3 runners						27,5				
Endur i9.1 (OD-5R)	5 runners						28,0				

Entry: 4 ways | Nesting height: – | Safety rim: 9 mm (optional without)



nominal sizes in mm

Options

Color: [other colors on request*3] > Individual marking*3

Anti-slip: safety rim, grommets on deck, under deck and under skids

ESD prevention: –



*1 Figures can vary depending on the raw material used and options applied. *2 Guideline values are based both on experience and parts of test ISO 8611, which tests with evenly distributed loads at room temperature (20°C). Varying data may result from different conditions of usage. Your specific requirements can be identified upon request. *3 Minimum quantity required - PO pallets should only be used and stored in a dry environment. We reserve the right to change any of the stated information without prior notice.