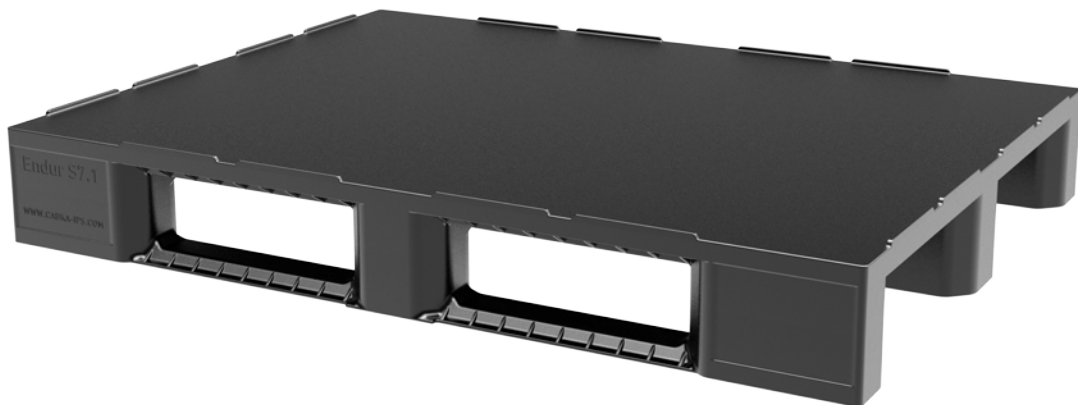


Endur S7.1 | 1200 x 900



Robust plastic pallet in the special dimensions of 1200 × 900 mm

The Endur S7.1 is manufactured in the special dimensions of 1200 × 900 mm. It therefore works perfect for products that, given their special size, are either too small for industry pallets or too big for the Euro-size pallets. The pallet is manufactured from impact-resistant PP and is robust, durable, and ideally suited for semi-hygienic applications and for applications with high circulation rates in open and closed pools. It is used in the food and beverage industry, for example, but it is also a popular solution for the transport of intermediate products in areas such as the construction industry.

Bottom support



> 3 runners (3R)

Deck options



> closed deck (CD)



Equipped with safety rim

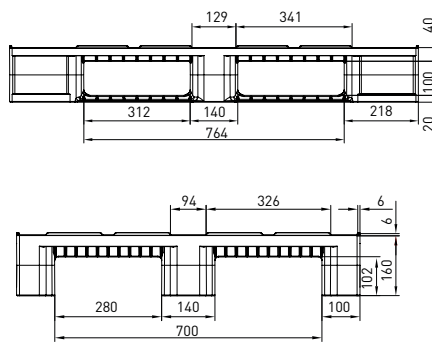
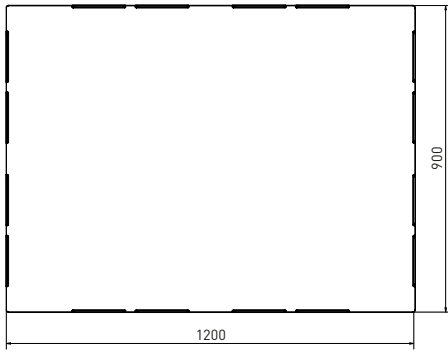


Available with up to 12 antislip stoppers

Technical data*1

	Bottom support	Top deck	Dimensions [mm]	Load capacities*2 [kg]			Weight [kg]		Pallets per	
				Static	Dynamic	Racking	PP	PO	Stack	Truck
Endur S7.1 (CD-3R)	3 runners	closed	1200 x 900 x 160	4400	2200	1100	17,5	-	14	420

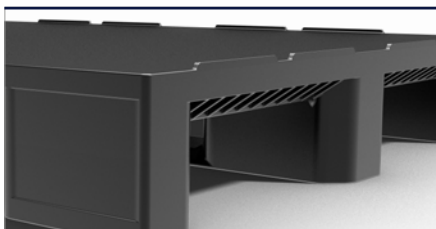
Entry: 4 ways | Nesting height: - | Safety rim: 6 mm



nominal sizes in mm

Options

- Color: (other colors on request*3) > Individual marking*3
- Anti-slip: safety rim (standard), grommets under deck (12) > RFID transponders
- ESD prevention: anti-static, conductive



*1 Figures can vary depending on the raw material used and options applied. *2 Guideline values are based both on experience and parts of test ISO 8611, which tests with evenly distributed loads at room temperature (20°C). Varying data may result from different conditions of usage. Your specific requirements can be identified upon request. *3 Minimum quantity required - PO pallets should only be used and stored in a dry environment. We reserve the right to change any of the stated information without prior notice.