

Endur H7

800 x 600



Available in



Excellent half size plastic pallet for high rotations

Made of impact-resistant PP – no metal reinforcements – this pallet is ideal for semi-hygienic applications and for high-rotation usage such as open or closed pools. The pallet is made using gas-assist technology, meaning that internal hollow channels make the pallet more rigid. This benefit is especially useful when the pallet is used in racks.

Bottom support



> 3 runners (3R)

Deck options



> open deck (OD)



3 parts pallet with connector system



anti-slip strips (optional)



strong runners



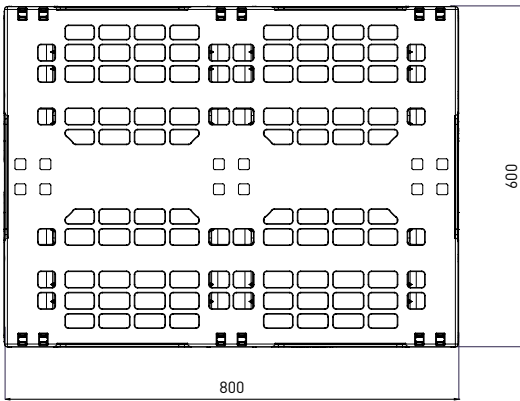
No. 1 in retail

Technical data*1

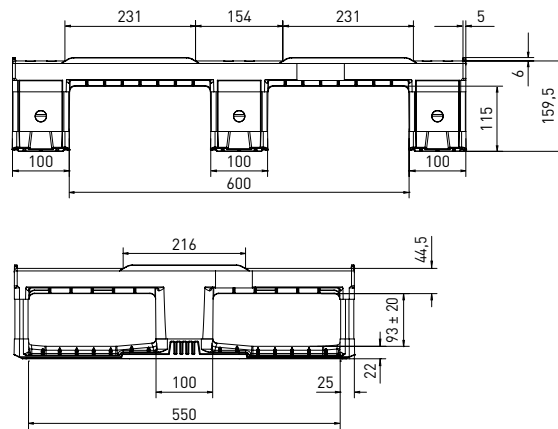
| | Bottom support | Top deck | Dimensions [mm] | Load capacities*2 [kg] | | | Weight [kg] | | Pallets per | |
|------------------|----------------|----------|-----------------|------------------------|---------|---------|-------------|----|-------------|-------|
| | | | | Static | Dynamic | Racking | PP | P0 | Stack | Truck |
| Endur H7 (OD-3R) | 3 runners | open | 800 x 600 x 160 | 2000 | 1000 | 500* | 8,0 | — | 32 | 1056 |

* only with the 600 mm side

Entry: 4 ways | Nesting height: – | Safety rim: 6 mm (optional without)



nominal sizes in mm



Options

- Color: [other colors on request*3] > Individual marking*3
- Anti-slip: safety rim, strips on deck > RFID transponders
- ESD prevention: anti-static



*1 Figures can vary depending on the raw material used and options applied. *2 Guideline values are based both on experience and parts of test ISO 8611, which tests with evenly distributed loads at room temperature (20°C). Varying data may result from different conditions of usage. Your specific requirements can be identified upon request. *3 Minimum quantity required - PO pallets should only be used and stored in a dry environment. We reserve the right to change any of the stated information without prior notice.